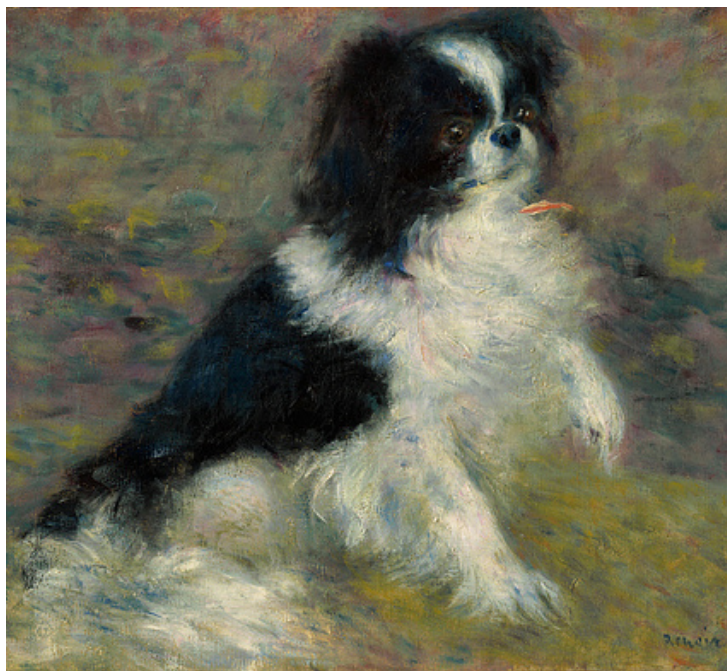


# A YEAR OF JOURNALING



## A DIFFERENT KIND OF LOVE

Pierre-Auguste Renoir was one of the leaders of the Impressionists, a group of painters in France in the late 1800s. The Impressionists were interested in color, light, and capturing the experience of ordinary life.

This painting is a picture of Renoir's friend's dog named Tama.

Pierre-Auguste Renoir, *Tama, the Japanese Dog (detail)*, c. 1876. Oil on canvas. Acquired by Sterling and Francine Clark, 1930, 1955.597.

## IN YOUR OWN WORDS

How does the way Renoir painted the picture suggest that Tama was a beloved pet?

Have you ever had a special love for a real or fictional animal?

How is love for an animal different from the kind of love you might share with a human being? In what ways is it similar?

Do you (or does anyone you know) have an affinity for any type of wild or imaginary animal? What makes that animal important to you?