

THE CLARK

IN YOUR CLASSROOM

CAPABLE COMPANIONS



Best for Grades 4 and up



Links to Social & Emotional Health and Visual Art

INTRODUCTION

Create a **Capable Companion**—an imaginary creature with special powers—made out of materials you find in your classroom or home. **Capable Companions** can help make the world a better place in an infinite number of ways. What will your Capable Companion do? Listen to your thoughts? Keep a secret? Make other people laugh or remind them to be considerate? The possibilities are endless!

CAPABLE

ABLE TO DO SOMETHING WELL

COMPANION

A PERSON OR ANIMAL WITH WHOM ONE SPENDS A LOT OF TIME; A FRIEND

Some things to consider while you create your Capable Companion:

- Do they have a name?
- What is their unique and special power?
- What materials will you use to make your Capable Companion, and why?
- Does your Capable Companion see? Hear? Communicate?

WHAT YOU'LL NEED

- Recycled materials and/or natural materials (bottles, cans, bottle caps, lids, cups, egg cartons, cardboard tubes, cardboard boxes, bubble wrap, dryer lint, twigs, acorns . . . anything you can find; there is no wrong way to do it!)
- Glue, string, wire, and toothpicks to assemble your materials
- Scissors
- Markers, paint, crayons, or bits of paper to decorate your Companion

THE CLARK CONNECTS



THIS PROJECT IS AN ACTIVITY FROM THE CLARK'S CURATING A CULTURE OF RESPECT (CCR) PROGRAM. CCR ENGAGES MIDDLE SCHOOL STUDENTS WITH ART AS A VEHICLE TO EXPAND AWARENESS OF HUMAN RELATIONSHIPS, PERSPECTIVES, AND CHOICES. THE PROGRAM IS DESIGNED TO ENCOURAGE STUDENTS TO BE MORE AWARE OF THEIR OWN PERSONAL POWER IN SHAPING POSITIVE FUTURES.

THE CLARK

IN YOUR CLASSROOM

CAPABLE COMPANIONS

COLLECTION CONNECTIONS



Hendrick Goltzius, *The Great Hercules*, 1589. Engraving on paper. Acquired by the Clark, 1996. 1996.11.

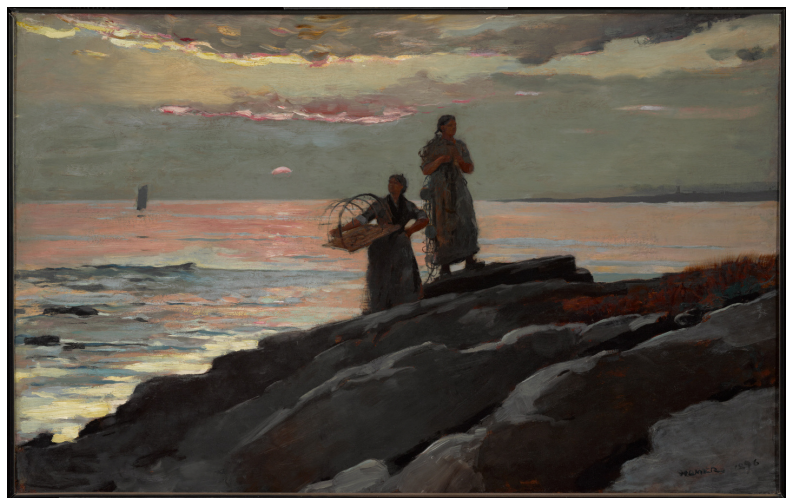
What is the first thing you notice when you look at this image?

Hendrick Goltzius was well known for his artworks of figures with great strength and bulging muscles. This **engraving** has long been known as the Knollenman, or bulbous man. Stout and aggressively strong, *The Great Hercules* stands in a commanding stance spanning almost the entire width of the **foreground**—adding to our sense of his power. What other details has Goltzius included to give us a sense of just how tough Hercules really is?

HOW CAN YOU REPRESENT STRENGTH MADE OUT OF THE MATERIALS YOU HAVE FOR YOUR CAPABLE COMPANION?

Two strong, **capable** women are shown carrying fishing nets and lobster traps in front of a sunset at Saco Bay, Maine. This was a frequently visited spot for painter Winslow Homer, whose studio was nearby. Homer considered **this painting** to be one of his best works.

Take a closer look at the two figures. How would you describe them? Notice how Homer depicted them with the same **color palette** as he used for the rocks. How does this give us a sense of these women's strength of character and stability? Do you see anything else in the painting depicted in similar colors?



Winslow Homer, *Saco Bay*, 1896. Oil on canvas. Acquired by Sterling and Francine Clark, 1923. 1955.5.

WHICH COLORS WILL YOU USE TO DECORATE YOUR CAPABLE COMPANION?
DO THE COLORS HAVE ANY **SYMBOLIC MEANING**?

THE CLARK

IN YOUR CLASSROOM

CAPABLE COMPANIONS

COLLECTION CONNECTIONS



Elizabeth Nourse, *The Kiss (Le Baiser)*, c. 1906. Pastel and charcoal on paper, mounted on board. Acquired by the Clark, 2017. 2017.4.

Elizabeth Nourse's *The Kiss (Le Baiser)* displays a quick expression of gentleness and warmth between two sisters. The **composition** focuses entirely on the two figures, there is no background to be seen, highlighting the importance of this tender, fleeting, and powerful moment.

This drawing may be considered **autobiographical**, or about the artist's real life. We know that Nourse's relationship with her older sister Louise was a lifelong source of comfort and security for her.

Take a look at the older sister's face as she kisses the cheek of the younger one. What do you think she's feeling? How does this moment give her strength?

DOES YOUR CAPABLE COMPANION SHOW THEIR STRENGTH WITH THEIR BODY, WITH THEIR HEART AND MIND, OR WITH BOTH?

OTHER WAYS TO CREATE

Want to share your Capable Companion with the digital community? Take a picture of your Companion, post it to your social media platform and include #capablecompanion in your description.

FEATURED VOCABULARY

COLOR PALETTE
THE RANGE OF COLORS USED IN AN ARTWORK

COMPOSITION
THE WAY AN ARTWORK IS PUT TOGETHER OR ARRANGED

ENGRAVING
AN ARTISTIC TECHNIQUE THAT INVOLVES MAKING CUTS INTO A METAL PLATE, AND THEN USING INK AND PAPER

FOREGROUND
THE AREA IN AN ARTWORK THAT IS CLOSEST TO THE VIEWER; OBJECTS ARE BIGGEST

SYMBOLIC MEANING
SOMETHING THAT REPRESENTS OR STANDS FOR SOMETHING ELSE