

**Paper Trails: 100 Great Drawings, Prints, and Photographs from the Clark
February 19, 2006 to April 30, 2006
Sterling and Francine Clark Art Institute, Williamstown, MA**

Sample Images Available for Media Use

The following images are available as 300 dpi color jpeg files for press use in connection with the exhibition. To request images, contact Sarah Hoffman at 413-458-0471 or shoffman@clarkart.edu.



Adam and Eve, 1504, by Albrecht Dürer. Engraving on paper, image height: 9.76 in. by 7.56 in. (24.80 cm. by 19.20 cm.). Sterling and Francine Clark Art Institute, Williamstown, Massachusetts.



The Frugal Repast, 1904, by Pablo Picasso. Etching on paper, plate height: 18.15 in. by 14.88 in. (46.10 cm. by 37.80 cm.). Sterling and Francine Clark Art Institute, Williamstown, Massachusetts.



The Bathers: Large Plate (Les Baigneurs: Grande Planche), 1898, by Paul Cézanne. Lithograph in black and colors on laid paper, image size: 16.73 in. by 20.75 in. (42.50 cm. by 52.70 cm.). Sterling and Francine Clark Art Institute, Williamstown, Massachusetts.



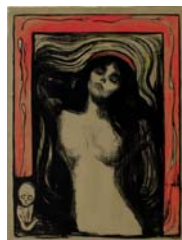
Woman Wearing Foxes, Bois de Boulogne, 1911, by Jacques-Henri Lartigue. Gelatin silver print, 2.63 in. by 4.38 in. (6.67 cm. by 11.11 cm.). Sterling and Francine Clark Art Institute, Williamstown, Massachusetts.



The Angel at the Sepulchre, 1869, by Julia Margaret Cameron. Albumen print from wet-collodion-on-glass negative, 14.02 in. by 10.00 in. (35.60 cm. by 25.40 cm.). Sterling and Francine Clark Art Institute, Williamstown, Massachusetts.



The Little Laundress (La petite blanchisseuse), 1896, by Pierre Bonnard. Lithograph in deep red, orange yellow, bistre, gray-black, grayish beige, on China paper, image size 11.38 in. by 7.72 in. (28.90 cm. by 19.60 cm.). Sterling and Francine Clark Art Institute, Williamstown, Massachusetts.



Madonna, 1895, by Edvard Munch. Lithograph with touches of gouache on paper, image size: 23.54 in. by 17.32 in. (59.80 cm. by 44.00 cm.). Sterling and Francine Clark Art Institute, Williamstown, Massachusetts.



Portrait of Thomas Howard, Earl of Arundel, c. 1629-30, by Peter Paul Rubens. Brush and brown ink, dark brown oil color(?), brown and gray wash, heightened with white and touches of red wash, 18.27 in. by 14.02 in. (46.40 cm. by 35.60 cm.). Sterling and Francine Clark Art Institute, Williamstown, Massachusetts.