

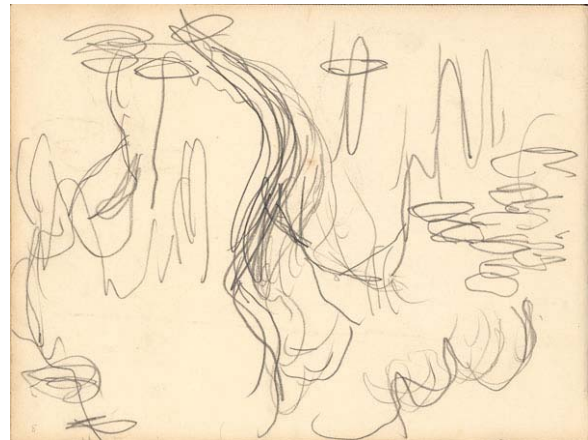
The Unknown Monet: Pastels and Drawings
June 24 through September 16, 2007
Sterling and Francine Clark Art Institute, Williamstown, MA

Sample Images Available for Media Use

The following images are available as 300 dpi color jpeg files for press use in connection with the exhibition. To request images, contact pr@clarkart.edu or 413-458-0471.



Water Lilies, 1916-19, by Claude Monet
Oil on canvas, 200 x 180 cm
Fondation Beyeler, Riehen/Basel



Study of Water Lilies, c. 1914-19, by Claude Monet
Crayon drawing in sketchbook 6, 235 x 315 mm
Musée Marmottan Monet, Paris



Waterloo Bridge, c. 1901, by Claude Monet
Pastel, 305 x 480 mm
Triton Foundation, The Netherlands



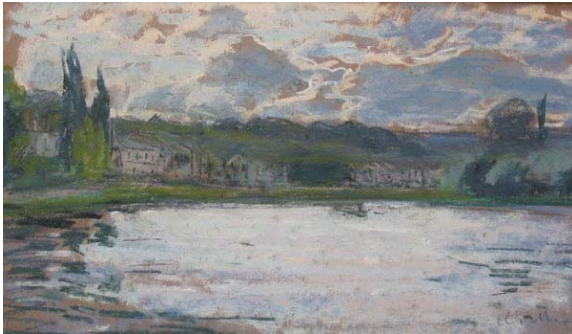
Portrait of a Woman, c. 1890-95, by Claude Monet
Red chalks with stumping, 285 x 210 mm
Private collection



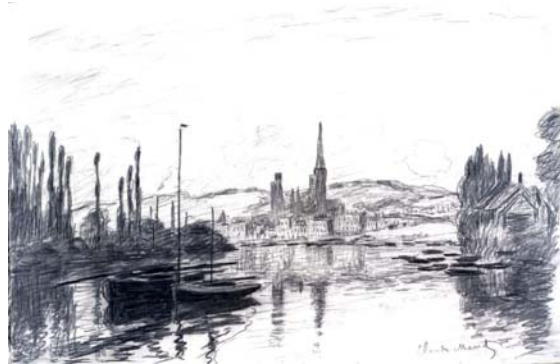
Caricature of a Man with a Snuff Box, c. 1858,
by Claude Monet
Charcoal heightened with white chalk on blue laid paper
(discolored to gray), 588 x 330 mm
Sterling and Francine Clark Art Institute,
Williamstown, Massachusetts



Étretat, the Needle Rock and Porte d'Aval, c. 1885,
by Claude Monet
Pastel on tan paper, 400 x 235 mm
Private collection



Bank of the Seine, c. 1869, by Claude Monet
Pastel on tan paper, 245 x 425 mm
Private collection



View of Rouen, 1883, by Claude Monet
Black crayon and scratchwork on Gillot paper, 313 x 475 mm
Sterling and Francine Clark Art Institute,
Williamstown, Massachusetts