

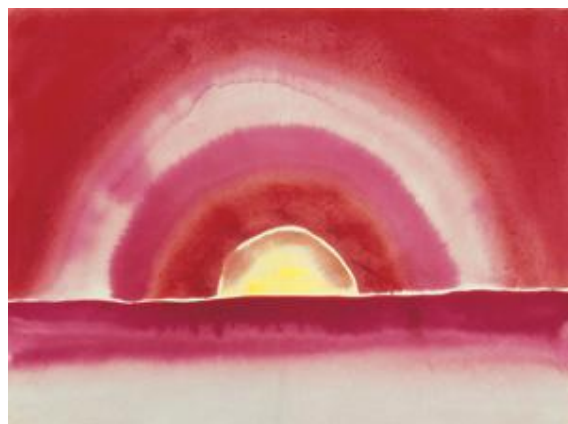
**Dove/O'Keeffe: Circles of Influence**  
**June 7 through September 7, 2009**  
**Sterling and Francine Clark Art Institute, Williamstown, MA**

**Sample Images Available for Media Use**

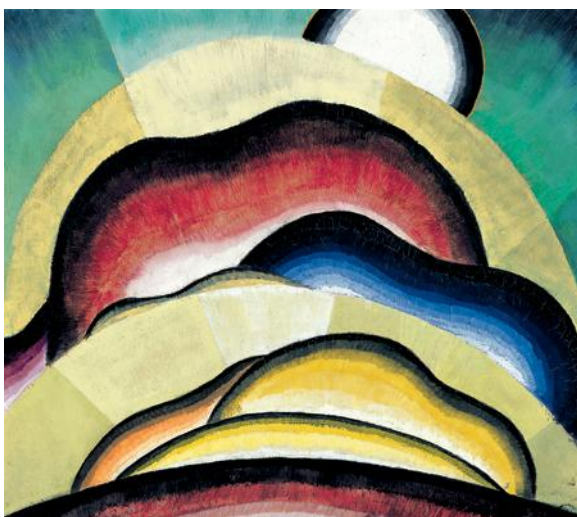
The following images are available as 300 dpi color jpeg files for press use in connection with the exhibition. To request images, email [pr@clarkart.edu](mailto:pr@clarkart.edu).



Arthur Dove, *Sunrise I*, 1936.  
Tempera on canvas, 25 x 35 in. (63.5 x 88.9 cm).  
Collection of Deborah and Ed Shein  
Courtesy of and copyright The Estate of Arthur Dove / Courtesy  
Terry Dintenfass, Inc.



Georgia O'Keeffe, *Sunrise*, 1916.  
Watercolor on paper, 8 7/8 x 11 7/8 in. (22.5 x 30.2 cm).  
Collection of Barney A. Ebsworth  
© 2009 Georgia O'Keeffe Museum / Artists Rights Society  
(ARS), New York



Arthur Dove, *Sunrise*, 1924.  
Oil on panel, 18 1/4 x 20 7/8 in. (46.4 x 53 cm).  
Milwaukee Art Museum. Gift of Mrs. Edward R. Wehr  
[Photo by John R. Glembin; Courtesy of and copyright The  
Estate of Arthur Dove / Courtesy Terry Dintenfass, Inc.]



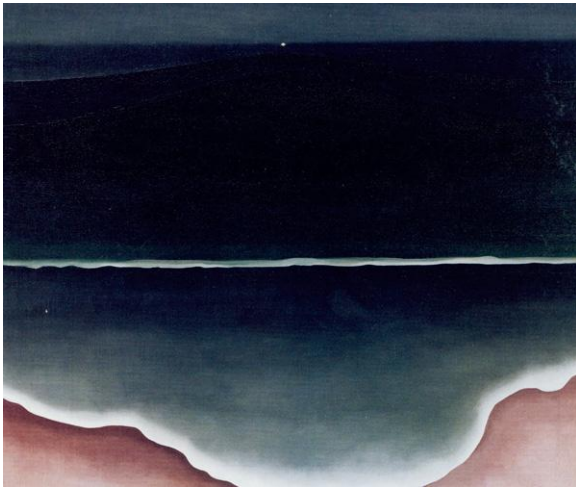
Georgia O'Keeffe, *Blue I*, 1916.  
Watercolor on paper, 30 7/8 x 22 1/4 in. (78.4 x 56.5 cm).  
Private collection  
© 2009 Georgia O'Keeffe Museum / Artists Rights Society  
(ARS), New York



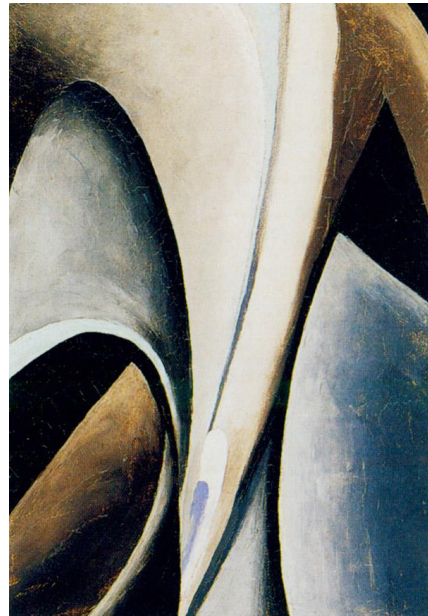
Georgia O'Keeffe, *Red & Orange Streak*, 1919. Oil on canvas, 27 x 23 in. (68.6 x 58.4 cm). Philadelphia Museum of Art. Bequest of Georgia O'Keeffe for the Alfred Stieglitz Collection, 1987 [Courtesy of the Philadelphia Museum of Art]



Arthur Dove, *Fog Horns*, 1929. Oil on canvas, 18 x 26 in. (45.7 x 66 cm). Colorado Springs Fine Arts Center. Anonymous Gift, FA 1954.1  
Courtesy of and copyright The Estate of Arthur Dove / Courtesy Terry Dintenfass, Inc.



Georgia O'Keeffe, *Wave, Night*, 1928. Oil on canvas, 30 x 36 in. (76.2 x 91.4 cm). Addison Gallery of American Art, Phillips Academy, Andover, Massachusetts. Purchased as the gift of Charles L. Stillman (PA 1922)  
All rights reserved, Addison Gallery of American Art, Phillips Academy, Andover, Massachusetts; © 2009 Georgia O'Keeffe Museum / Artists Rights Society (ARS), New York



Georgia O'Keeffe, *Abstraction*, 1919. Oil on canvas, 10 1/8 x 7 1/16 in. (25.7 x 17.9 cm). Newark Museum. Gift of Henry Ploch, 2000  
© 2009 Georgia O'Keeffe Museum / Artists Rights Society (ARS), New York