

THE CLARK

COLLECTIONS CONCENTRATION

Try your hand at the classic game of “Concentration” with these works of art from the Clark's collections! Prepare your game by printing and cutting out the image cards (pages 3-12). Print them single-sided in landscape orientation on cardstock for the best results. Leave the backs of the cards blank or print out ten copies of our Clark logo design (page 2) and glue them to the reverse of your cards. When you're done, you should have 40 cards (20 pairs). Use all 20 pairs for older players or start with 3-4 pairs to introduce very young players to the game.

PLAYING THE GAME

- 1 Place the cards in rows with the collections images face-down.
- 2 For each turn, flip over two cards. If the cards match, leave them face up. If not, flip the cards back over.
- 3 As you play, try to remember where each card is! Making matches gets easier with each turn. Want an extra challenge? Set yourself a time limit for your game!
- 4 To play with two or more people, take turns flipping over cards. Whoever makes the most matches by the end of the game wins!

**THE
CLARK**

**THE
CLARK**

**THE
CLARK**

**THE
CLARK**



Frederic Remington, *Friends or Foes? (The Scout)*, 1902–05. Oil on canvas.
Acquired by Sterling and Francine Clark, 1945, 1955.12.



Frederic Remington, *Friends or Foes? (The Scout)*, 1902–05. Oil on canvas.
Acquired by Sterling and Francine Clark, 1945, 1955.12.



Joseph Mallord William Turner, *Rockets and Blue Lights (Close at Hand) to Warn Steamboats of Shoal Water*, 1840. Oil on canvas. Acquired by Sterling and Francine Clark, 1932, 1955.37.



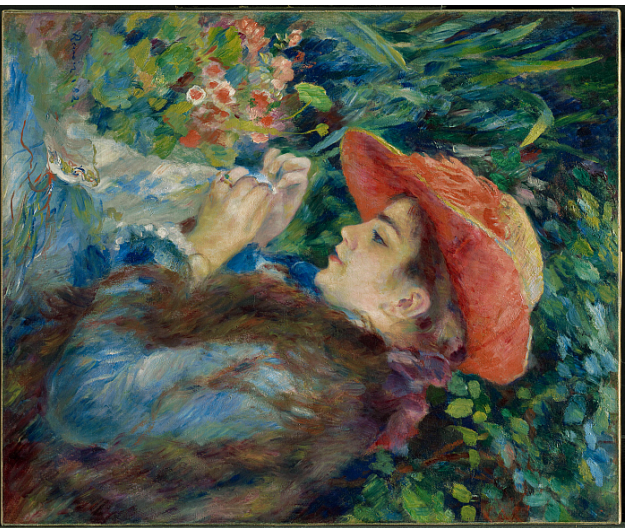
Joseph Mallord William Turner, *Rockets and Blue Lights (Close at Hand) to Warn Steamboats of Shoal Water*, 1840. Oil on canvas. Acquired by Sterling and Francine Clark, 1932, 1955.37.



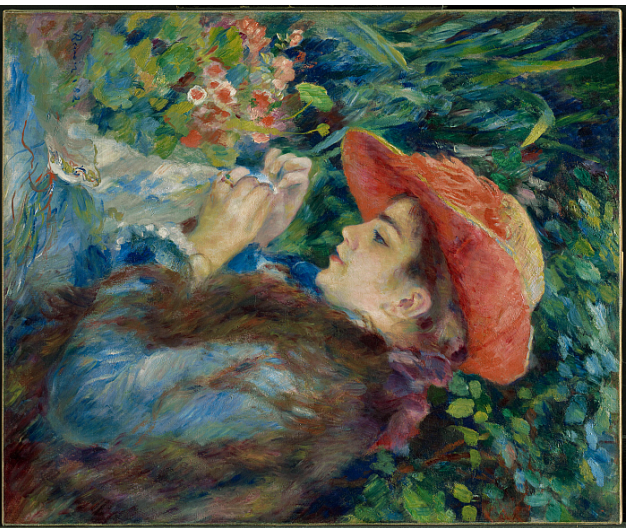
Jean-François Millet, *The Knitting Lesson*, c. 1860. Oil on panel.
Acquired by Sterling and Francine Clark, 1945, 1955-53.



Jean-François Millet, *The Knitting Lesson*, c. 1860. Oil on panel.
Acquired by Sterling and Francine Clark, 1945, 1955-53.



Pierre-Auguste Renoir, *Marie-Thérèse Durand-Ruel Sewing*, 1882.
Oil on canvas. Acquired by Sterling and Francine Clark, 1935,
1955,613.



Pierre-Auguste Renoir, *Marie-Thérèse Durand-Ruel Sewing*, 1882.
Oil on canvas. Acquired by Sterling and Francine Clark, 1935,
1955,613.



Giovanni Boldini, *Crossing the Street*, 1873–75. Oil on panel.
Acquired by Sterling and Franckne Clark, 1925, 1955.650.



Pierre Bonnard, *The Little Laundress (La petite blanchisseuse)*, 1896.
Lithograph in deep red, orange yellow, bistre, gray, black, grayish beige,
on China paper. Acquired by the Clark, 1962, 1962.7.



Giovanni Boldini, *Crossing the Street*, 1873–75. Oil on panel.
Acquired by Sterling and Franckne Clark, 1925, 1955.650.



Pierre Bonnard, *The Little Laundress (La petite blanchisseuse)*, 1896.
Lithograph in deep red, orange yellow, bistre, gray, black, grayish beige,
on China paper. Acquired by the Clark, 1962, 1962.7.



Jean-Honoré Fragonard, *The Warrior*, c. 1770.
Oil on canvas. Acquired by the Clark, 1964, 1964.8.



Jean-Honoré Fragonard, *The Warrior*, c. 1770.
Oil on canvas. Acquired by the Clark, 1964, 1964.8.



Lippert & Haas
Manufactory, *Plate*, 1840.
Hard-paste porcelain.
Acquired by the Clark,
1996, 1996.7.



Lippert & Haas
Manufactory, *Plate*, 1840.
Hard-paste porcelain.
Acquired by the Clark,
1996, 1996.7.



Heinrich Kühn. *Still Life with Carnations*. 1896. Red gum bichromate print on paper. Acquired by the Clark, 2013, 2013.8.



Heinrich Kühn. *Still Life with Carnations*. 1896. Red gum bichromate print on paper. Acquired by the Clark, 2013, 2013.8.



Samuel Palmer. *The Setting Sun*, c. 1862. Watercolor and gouache, with touches of shell gold and scraping, on cream wove paper. Gift of the Manton Art Foundation in memory of Sir Edwin and Lady Manton, 2007, 2007.8.91.



Samuel Palmer. *The Setting Sun*, c. 1862. Watercolor and gouache, with touches of shell gold and scraping, on cream wove paper. Gift of the Manton Art Foundation in memory of Sir Edwin and Lady Manton, 2007, 2007.8.91.



Katsushika Hokusai. *The Kannon of the Pure Waterfall at Sakanoshita on the Tokaido Road*. 1852. Color woodblock print. Gift of the Rodbell Family Collection, 2014. 2014.16.1.



Mary Cassatt. *Child with Red Hat*. c. 1904. Pastel on light blue paper. Acquired by Sterling and Franche Clark. 1955. 1955.674.



Katsushika Hokusai. *The Kannon of the Pure Waterfall at Sakanoshita on the Tokaido Road*. 1852. Color woodblock print. Gift of the Rodbell Family Collection, 2014. 2014.16.1.



Mary Cassatt. *Child with Red Hat*. c. 1904. Pastel on light blue paper. Acquired by Sterling and Franche Clark. 1955. 1955.674.



Watanabe Seitei, *Birds on a Branch*, 1871–1917. Watercolor on paper.
Acquired by Sterling and Francine Clark before 1955. 1955.814.



Watanabe Seitei, *Birds on a Branch*, 1871–1917. Watercolor on paper.
Acquired by Sterling and Francine Clark before 1955. 1955.814.



Claude Monet, *Seascape, Storm*, 1866. Oil on canvas.
Acquired by Sterling and Francine Clark, 1950. 1955.561.



Claude Monet, *Seascape, Storm*, 1866. Oil on canvas.
Acquired by Sterling and Francine Clark, 1950. 1955.561.



Meissen Porcelain
Manufactory, *Bowl from
the Swan Service*,
c. 1738–39. Hard-paste
porcelain. Acquired by
the Clark, 1972, 1972.4.



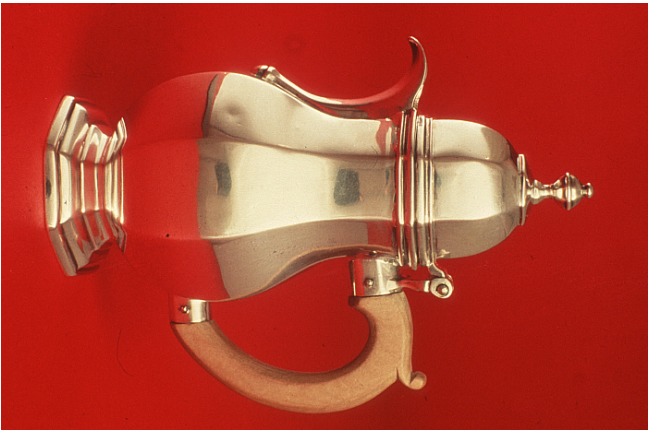
Meissen Porcelain
Manufactory, *Bowl from
the Swan Service*,
c. 1738–39. Hard-paste
porcelain. Acquired by
the Clark, 1972, 1972.4.



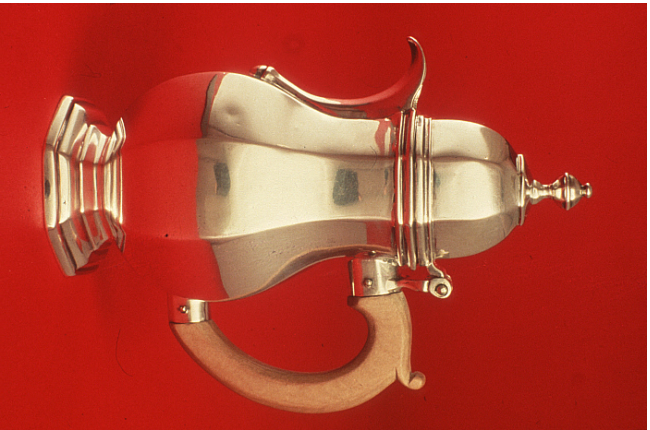
George Inness, *Sunrise in the Woods*, 1887. Oil on canvas.
Gift of Frank and Katherine Martucci, 2013, 2013.1.6.



George Inness, *Sunrise in the Woods*, 1887. Oil on canvas.
Gift of Frank and Katherine Martucci, 2013, 2013.1.6.



Maker's mark P.E., probably for William Pearson. *Jug and Cover*.
1716/17. Silver and wood.
Acquired by Sterling and Francine Clark, 1933. 1955.347.



Maker's mark P.E., probably for William Pearson. *Jug and Cover*.
1716/17. Silver and wood.
Acquired by Sterling and Francine Clark, 1933. 1955.347.



Alfred Sisley, *Banks of the Seine at By*, c. 1880–81. Oil on canvas.
Acquired by Sterling and Francine Clark, 1948. 1955.534.



Alfred Sisley, *Banks of the Seine at By*, c. 1880–81. Oil on canvas.
Acquired by Sterling and Francine Clark, 1948. 1955.534.



Hashimoto Okiie, *Young Girl and Iris*, 1952. Color woodblock print.
Gift of the Rodbell Family Collection, 2014. 2014.16.52.



Hashimoto Okiie, *Young Girl and Iris*, 1952. Color woodblock print.
Gift of the Rodbell Family Collection, 2014. 2014.16.52.



Childe Hassam, *Little Girl with a Pear*, c. 1889-93. Pastel on tan paper.
Acquired by Sterling and Françoise Clark, 1941. 1955.761.



Childe Hassam, *Little Girl with a Pear*, c. 1889-93. Pastel on tan paper.
Acquired by Sterling and Françoise Clark, 1941. 1955.761.